

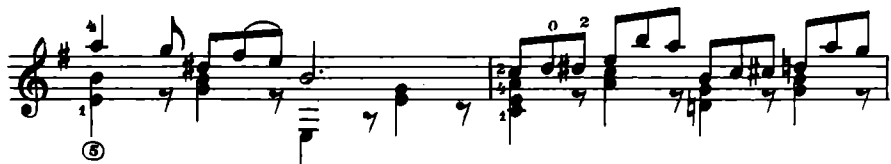
## ПА - ДЕ - КАТР

Оживлённо

1 *biŭ* *piз-p*, 2 *oŭ* *piз-f*

II

*p*



The first staff of musical notation is in G major (one sharp). It begins with a treble clef and a key signature of one sharp. The melody starts with a quarter note G4, followed by a dotted quarter note A4, and an eighth note B4. A slur covers a quarter note C5, a quarter note B4, and a quarter note A4. The bass line consists of a half note G3, a quarter note G3, and a quarter note G3. A fermata is placed over the first measure. The second measure has a '2' above the treble clef, and the third measure has a '1' above it. The fourth measure has a '4' above it, and the fifth measure has a '7' above it. The sixth measure has a '4' above it, and the seventh measure has a '7' above it. The eighth measure has a '7' above it. The bass line continues with a quarter note G3, a quarter note G3, and a quarter note G3.

The second staff continues the piece. It features a treble clef and a key signature of one sharp. The melody begins with a quarter note G4, followed by a dotted quarter note A4, and an eighth note B4. A slur covers a quarter note C5, a quarter note B4, and a quarter note A4. The bass line consists of a half note G3, a quarter note G3, and a quarter note G3. The second measure has a '3' above it, and the third measure has a '4' above it. The fourth measure has a '1' above it. The fifth measure has a '2' above it, and the sixth measure has a '4' above it. The seventh measure has a '5' above it. The eighth measure has a '1' above it, and the ninth measure has a '1' above it. The tenth measure has a '1' above it. The eleventh measure has a '1' above it, and the twelfth measure has a '1' above it. The bass line continues with a quarter note G3, a quarter note G3, and a quarter note G3.

The third staff continues the piece. It features a treble clef and a key signature of one sharp. The melody begins with a quarter note G4, followed by a dotted quarter note A4, and an eighth note B4. A slur covers a quarter note C5, a quarter note B4, and a quarter note A4. The bass line consists of a half note G3, a quarter note G3, and a quarter note G3. The second measure has a '4' above it, and the third measure has a '1' above it. The fourth measure has a '2' above it. The fifth measure has a '4' above it, and the sixth measure has a '4' above it. The seventh measure has a '4' above it, and the eighth measure has a '4' above it. The ninth measure has a '4' above it, and the tenth measure has a '4' above it. The bass line continues with a quarter note G3, a quarter note G3, and a quarter note G3.

The fourth staff continues the piece. It features a treble clef and a key signature of one sharp. The melody begins with a quarter note G4, followed by a dotted quarter note A4, and an eighth note B4. A slur covers a quarter note C5, a quarter note B4, and a quarter note A4. The bass line consists of a half note G3, a quarter note G3, and a quarter note G3. The second measure has a '2' above it. The third measure has a '4' above it, and the fourth measure has a '4' above it. The fifth measure has a '4' above it, and the sixth measure has a '4' above it. The seventh measure has a '4' above it, and the eighth measure has a '4' above it. The ninth measure has a '4' above it, and the tenth measure has a '4' above it. The bass line continues with a quarter note G3, a quarter note G3, and a quarter note G3.

The fifth staff continues the piece. It features a treble clef and a key signature of one sharp. The melody begins with a quarter note G4, followed by a dotted quarter note A4, and an eighth note B4. A slur covers a quarter note C5, a quarter note B4, and a quarter note A4. The bass line consists of a half note G3, a quarter note G3, and a quarter note G3. The second measure has a '4' above it, and the third measure has a '4' above it. The fourth measure has a '4' above it, and the fifth measure has a '4' above it. The sixth measure has a '4' above it, and the seventh measure has a '4' above it. The eighth measure has a '4' above it, and the ninth measure has a '4' above it. The tenth measure has a '4' above it, and the eleventh measure has a '4' above it. The bass line continues with a quarter note G3, a quarter note G3, and a quarter note G3.

The sixth staff continues the piece. It features a treble clef and a key signature of one sharp. The melody begins with a quarter note G4, followed by a dotted quarter note A4, and an eighth note B4. A slur covers a quarter note C5, a quarter note B4, and a quarter note A4. The bass line consists of a half note G3, a quarter note G3, and a quarter note G3. The second measure has a 'V' above it. The third measure has a 'V' above it. The fourth measure has a 'V' above it. The fifth measure has a 'V' above it. The sixth measure has a 'V' above it. The seventh measure has a 'V' above it. The eighth measure has a 'V' above it. The ninth measure has a 'V' above it. The tenth measure has a 'V' above it. The bass line continues with a quarter note G3, a quarter note G3, and a quarter note G3.